

RHB-OSK MONEY MARKET FUND (formerly known as OSK-UOB MONEY MARKET FUND)

This Fund aims to provide investors with a high level of liquidity whilst providing reasonable returns by investing in low risk investments.

INVESTMENT STRATEGY

- 90% - 100% of NAV: Investments in debentures, money market instruments and placements of deposits with financial institutions ("permitted investments") which have a remaining maturity period of not more than 365 days.
- 0% - 10% of NAV: Investments in permitted investments which have a remaining maturity period of more than 365 days but less than 732 days.

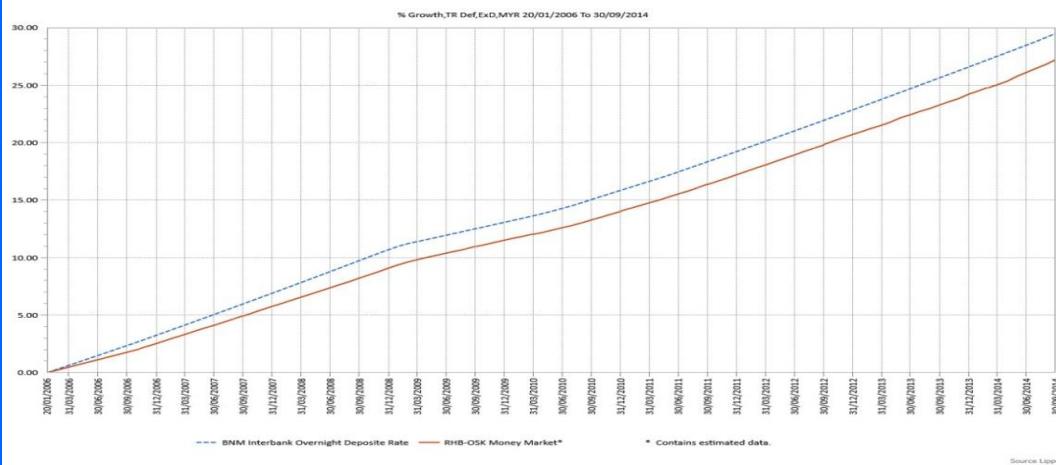
INVESTOR PROFILE

This Fund Is Suitable For Investors Who:

- require a high level of liquidity;
- are conservative and seek capital preservation;
- seek reasonable returns that commensurate with the low risks;
- prefer a short term investment horizon.

FUND PERFORMANCE ANALYSIS

Performance Chart Since Launch*



Cumulative Performance (%)*

	1 Month	3 Months	6 Months	YTD
Fund	0.32	0.88	1.74	2.44
Benchmark	0.27	0.80	1.55	2.30

	1 Year	3 Years	5 Years	Since Launch
Fund	3.23	9.34	14.68	27.24
Benchmark	3.07	9.44	15.09	29.51

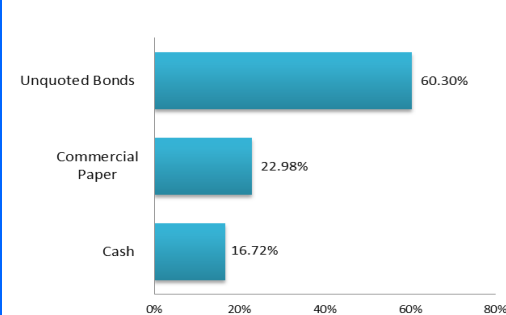
Calendar Year Performance (%)*

	2013	2012	2011	2010	2009
Fund	2.91	2.96	2.82	2.24	2.22
Benchmark	3.04	3.04	2.92	2.44	2.15

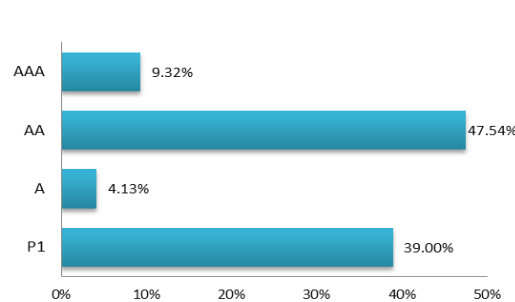
*Source: Lipper IM

FUND PORTFOLIO ANALYSIS

Sector Allocation*



Credit Profile*



Top Holdings (%)*

SUNWAY BERHAD-CP (03/10/2014)	17.31
BGSM MGMT SDN BHD-5.65%(26/12/2014)	11.91
MALAKOFF POWER BHD-4.3%(17/12/2015)	5.77
WCT HOLDINGS BERHAD-CP(27/03/2015)	5.74
SABAH CREDIT CORP-CP (27/02/2015)	5.68

Duration Profile (%)*

0-3 Months	49.54
3-6 Months	13.71
6-12 Months	17.31
>12 Months	19.44

*As percentage of NAV

FUND STATISTICS

Historical NAV (RM)

	1 Month	12 Months	Since Launch
High	1.0351	1.0371	1.0573
Low	1.0318	1.0102	1.0000

Source: Lipper IM

Historical Distributions (Last 5 Years) (Net)

	Distribution (sen)	Yield (%)
27 Dec 2013	2.7000	2.64
31 Dec 2012	2.6620	2.61
31 Dec 2011	2.7125	2.67
31 Dec 2010	2.2000	2.17
31 Dec 2009	2.2400	2.21

Source: RHB Asset Management Sdn. Bhd. (formerly known as RHB Investment Management Sdn. Bhd.)

RHB-OSK MONEY MARKET FUND (formerly known as OSK-UOB MONEY MARKET FUND)

This Fund aims to provide investors with a high level of liquidity whilst providing reasonable returns by investing in low risk investments.

MANAGER'S COMMENTS

The pause in Overnight Policy Rate ("OPR") spurred buying interest on the short-end of the curve. As a result, the local government bond market bullish steepened with short-end yields compressed more than long-end yields. At close, the 3-, 5-, 7-, 10-, 15-, 20- and 30-year MGS were traded at 3.47% (August: 3.50%), 3.67% (3.68%), 3.80% (3.81%), 3.89% (3.91%), 4.21% (4.21%), 4.31% (4.30%) and 4.71% (4.64%) respectively. On the other hand, performance of the Government Investment Issues ("GII") were rather range bound with the 3-, 5-, 7-, 10-, 15-year and 20-year benchmark yields transacted at 3.66% (July: 3.61%), 3.80% (3.79%), 4.00% (4.00%), 4.14% (4.14%), 4.42% (4.39%) and 4.62% (4.61%) respectively.

The 3 auctions in September – reopening of 3-year MGS (MGS 03/17, RM3.5bil, average yield 3.583%), reopening of 30-year MGS (MGS 09/43, RM2.0bil, 4.715%) and reopening of 5-year GII (GII 04/19, RM3.5bil, 3.793%) received moderate bid-to-cover ratio of 1.73x and 1.37x and 2.38x respectively.

On the domestic economic front, July trade surplus narrowed less than expected to RM3.64bil from RM3.97bil reported a month ago, on lower imports. Exports to US, Japan and China continue to slump while mild expansion was seen in Europe and Singapore. July Industrial Production ("IP") rose just 0.5% YoY (June: 7.0% YoY), significantly below consensus of 4.3%. The slowdown in IP was broad base, and is likely exaggerated by moving holiday effects as Ramadan fell almost entirely in Jul 2014. Lastly, BNM held OPR unchanged at 3.25% in the September Monetary Policy Committee ("MPC"), as the central bank's assessment of domestic growth somewhat less upbeat versus in July. The MPC noted that the global economy "continues to expand at a moderate pace", similar to the July assessment, though "growth performance has been uneven" among advanced economies. On the domestic economy, while the MPC continues to expect the economy to remain on a "steady growth path", the omission of the word "firmly" suggests somewhat less conviction.

DISCLAIMER:

Based on the fund's portfolio returns as at 15 September 2014, the Volatility Factor (VF) for this fund is 0.1 and is classified as "Very Low". (source: Lipper) "Very Low" includes funds with VF that are not more than 1.1 (source: Lipper). The VF means there is a possibility for the fund in generating an upside return or downside return around this VF. The Volatility Class (VC) is assigned by Lipper based on quintile ranks of VF for qualified funds. VF is subject to monthly revision and VC will be revised every six months. The fund's portfolio may have changed since this date and there is no guarantee that the fund will continue to have the same VF or VC in the future. Presently, only funds launched in the market for at least 36 months will display the VF and its VC. The VC referred to was dated 30 June 2014 which is calculated once every six months and is valid until its next calculation date, i.e. 31 December 2014.

A Product Highlights Sheet ("PHS") highlighting the key features and risks of the Fund is available and investors have the right to request for a PHS. Investors are advised to obtain, read and understand the PHS and the contents of the Master Prospectus dated 1 December 2013 and its supplementary(ies) (if any) ("the Master Prospectus") before investing. The Master Prospectus has been registered with the Securities Commission Malaysia who takes no responsibility for its contents. Amongst others, investors should consider the fees and charges involved. Investors should also note that the price of units and distributions payable, if any, may go down as well as up. Where a distribution is declared, investors are advised that following the issue of additional units/distribution, the NAV per unit will be reduced from cum-distribution NAV to ex-distribution NAV. Any issue of units to which the Master Prospectus relates will only be made on receipt of a form of application referred to in the Master Prospectus. For more details, please call 1-800-88-3175 for a copy of the PHS and the Master Prospectus or collect one from any of our branches or authorised distributors.

The Manager wishes to highlight the specific risks of the Fund are interest rate risk, credit / default risk and inflation / purchasing power risk. These risks and other general risks are elaborated in the Master Prospectus.

This factsheet is prepared for information purposes only. It does not have regard to the specific investment objectives, financial situation and the particular needs of any specific person who may receive it. Past performance is not necessarily a guide to future performance. Returns may vary from year to year.