

### RHB-OSK MONEY MARKET FUND (formerly known as OSK-UOB MONEY MARKET FUND)

This Fund aims to provide investors with a high level of liquidity whilst providing reasonable returns by investing in low risk investments.

#### INVESTMENT STRATEGY

- 90% - 100% of NAV: Investments in debentures, money market instruments and placements of deposits with financial institutions ("permitted investments") which have a remaining maturity period of not more than 365 days.
- 0% - 10% of NAV: Investments in permitted investments which have a remaining maturity period of more than 365 days but less than 732 days.

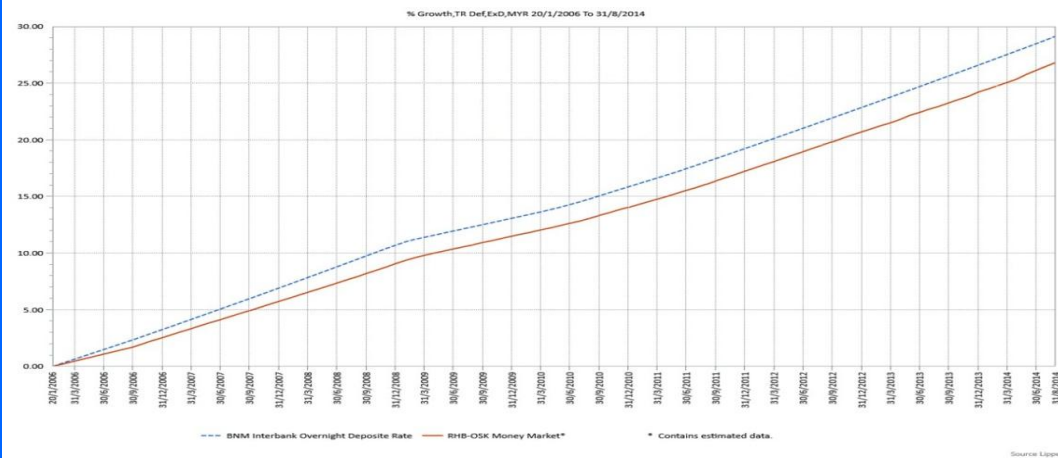
#### INVESTOR PROFILE

##### This Fund Is Suitable For Investors Who:

- require a high level of liquidity;
- are conservative and seek capital preservation;
- seek reasonable returns that commensurate with the low risks;
- prefer a short term investment horizon.

#### FUND PERFORMANCE ANALYSIS

##### Performance Chart Since Launch\*



##### Cumulative Performance (%)\*

	1 Month	3 Months	6 Months	YTD
Fund	0.27	0.83	1.66	2.12
Benchmark	0.27	0.78	1.54	2.03

	1 Year	3 Years	5 Years	Since Launch
Fund	3.15	9.27	14.53	26.84
Benchmark	3.05	9.41	14.97	29.17

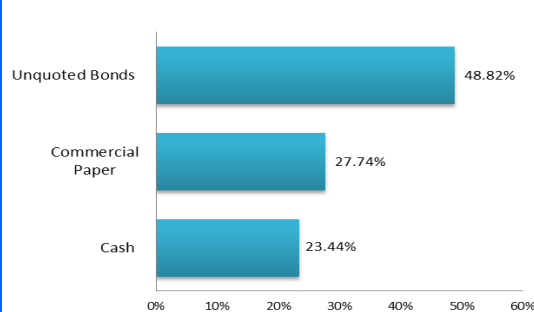
##### Calendar Year Performance (%)\*

	2013	2012	2011	2010	2009
Fund	2.91	2.96	2.82	2.24	2.22
Benchmark	3.04	3.04	2.92	2.44	2.15

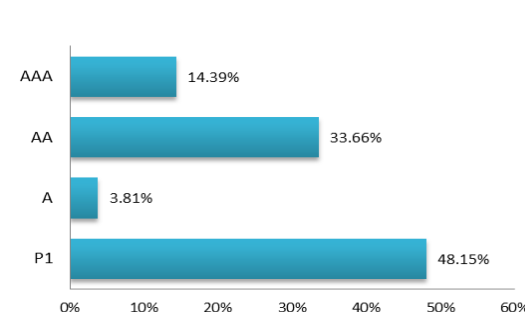
\*Source: Lipper IM

#### FUND PORTFOLIO ANALYSIS

##### Sector Allocation\*



##### Credit Profile\*



##### Top Holdings (%)\*

SUNWAY BERHAD-CP (04/09/2014)	16.71
BGSM MGMT SDN BHD-5.65%(26/12/2014)	5.85
CIMB GROUP HLDG BHD-CP(4/09/2014)	5.57
WCT HOLDINGS BERHAD-CP(27/03/2015)	5.50
SABAH CREDIT CORP-CP (27/02/2015)	5.46

##### Duration Profile (%)\*

0-3 Months	46.72
3-6 Months	14.77
6-12 Months	25.36
>12 Months	13.15

\*As percentage of NAV

#### FUND STATISTICS

##### Historical NAV (RM)

	1 Month	12 Months	Since Launch
High	1.0318	1.0371	1.0573
Low	1.0290	1.0102	1.0000

Source: Lipper IM

##### Historical Distributions (Last 5 Years) (Net)

	Distribution (sen)	Yield (%)
27 Dec 2013	2.7000	2.64
31 Dec 2012	2.6620	2.61
31 Dec 2011	2.7125	2.67
31 Dec 2010	2.2000	2.17
31 Dec 2009	2.2400	2.21

Source: RHB Asset Management Sdn. Bhd. (formerly known as RHB Investment Management Sdn. Bhd.)

**RHB-OSK MONEY MARKET FUND (formerly known as OSK-UOB MONEY MARKET FUND)**

This Fund aims to provide investors with a high level of liquidity whilst providing reasonable returns by investing in low risk investments.

**MANAGER'S COMMENTS**

Investors took profit on the local bond market ahead of the next Monetary Policy Committee ("MPC") meeting on 18th September. As a result, the benchmark yields moved slightly higher compared to end-July levels. At close, the 3-, 5-, 7-, 10-, 15-, 20- and 30-year MGS were traded at 3.50% (July: 3.47%), 3.68% (3.66%), 3.81% (3.75%), 3.91% (3.89%), 4.21% (4.21%), 4.30% (4.29%) and 4.64% (4.64%) respectively. On the other hand, performance of the Government Investment Issues ("GII") were rather range bound with the 3-, 5-, 7-, 10-, 15-year and 20-year benchmark yields transacted at 3.61% (July: 3.60%), 3.79% (3.78%), 4.00% (4.01%), 4.14% (4.14%), 4.39% (4.40%) and 4.61% (4.58%) respectively.

The 3 auctions in August – reopening of 7-year MGS (MGS 09/21, RM3.5bil, average yield 3.803%), reopening of 10-year SPK (SPK 02/24, RM1.0bil, 4.268%) and reopening of 10-year GII (GII 05/24, RM3bil, 4.140%) received moderate to strong bid-to-cover ratio of 2.00x and 5.59x and 2.60x respectively.

On the domestic economic front, June trade surplus narrowed as exports slowed more than imports. The slowdown in exports was due to sequential pullback in most major markets such as US, Europe, Japan and China. Jun exports rose 7.9% YoY (May: 16.2% YoY, consensus: 15% YoY) while imports slowed to 9.2% YoY (May: 11.8% YoY, consensus: 12.8% YoY). As a result, trade surplus narrowed more sharply than expected to RM3.79bil (May: 5.65bil) and Current Account surplus narrowed to 6.1% of GDP in 2Q2014 from 7.7% in 1Q2014. IP rose again in June to 7.0% YoY (May: 5.9% YoY, consensus: 5.0% YoY). The seasonally adjusted 2Q2014 headline IP was 4.1% above 1Q2014 average, signaling that 2Q2014 GDP growth could be higher than 1Q2014. Indeed, the 2Q2014 GDP numbers released on 15th August saw the country's growth picked up to 6.4% YoY (1Q2014: 6.2% YoY), mainly led by widening of the net exports and pick up in private investments. CPI was contained in July as the growth was lower than expectation. CPI grew by 3.2% YoY in July (June: 3.3%, consensus: 3.3%), moderately lower than the Overnight Policy Rate ("OPR") that was revised to 3.25% in July. Currently, the market is split between a call to increase interest rate at 0.25% by end of this year and early-2015.

**DISCLAIMER:**

Based on the fund's portfolio returns as at 15 August 2014, the Volatility Factor (VF) for this fund is 0.1 and is classified as "Very Low". (source: Lipper) "Very Low" includes funds with VF that are not more than 1.1 (source: Lipper). The VF means there is a possibility for the fund in generating an upside return or downside return around this VF. The Volatility Class (VC) is assigned by Lipper based on quintile ranks of VF for qualified funds. VF is subject to monthly revision and VC will be revised every six months. The fund's portfolio may have changed since this date and there is no guarantee that the fund will continue to have the same VF or VC in the future. Presently, only funds launched in the market for at least 36 months will display the VF and its VC. The VC referred to was dated 30 June 2014 which is calculated once every six months and is valid until its next calculation date, i.e. 31 December 2014.

A Product Highlights Sheet ("PHS") highlighting the key features and risks of the Fund is available and investors have the right to request for a PHS. Investors are advised to obtain, read and understand the PHS and the contents of the Master Prospectus dated 1 December 2013 and its supplementary(ies) (if any) ("the Master Prospectus") before investing. The Master Prospectus has been registered with the Securities Commission Malaysia who takes no responsibility for its contents. Amongst others, investors should consider the fees and charges involved. Investors should also note that the price of units and distributions payable, if any, may go down as well as up. Where a distribution is declared, investors are advised that following the issue of additional units/distribution, the NAV per unit will be reduced from cum-distribution NAV to ex-distribution NAV. Any issue of units to which the Master Prospectus relates will only be made on receipt of a form of application referred to in the Master Prospectus. For more details, please call 1-800-88-3175 for a copy of the PHS and the Master Prospectus or collect one from any of our branches or authorised distributors.

The Manager wishes to highlight the specific risks of the Fund are interest rate risk, credit / default risk and inflation / purchasing power risk. These risks and other general risks are elaborated in the Master Prospectus.

This factsheet is prepared for information purposes only. It does not have regard to the specific investment objectives, financial situation and the particular needs of any specific person who may receive it. Past performance is not necessarily a guide to future performance. Returns may vary from year to year.