

## RHB RETIREMENT SERIES - CONSERVATIVE FUND

This Fund aims to seek to provide capital preservation for the members' investment.

### INVESTMENT STRATEGY

- At least 80% of NAV: Investments in fixed income instruments and/or money market instruments, of which a minimum of 20% of the Fund's NAV must be in money market instruments.
- Up to 20% of NAV: Investments in equities.
- Up to 5% of NAV: Investments in cash or cash equivalents.

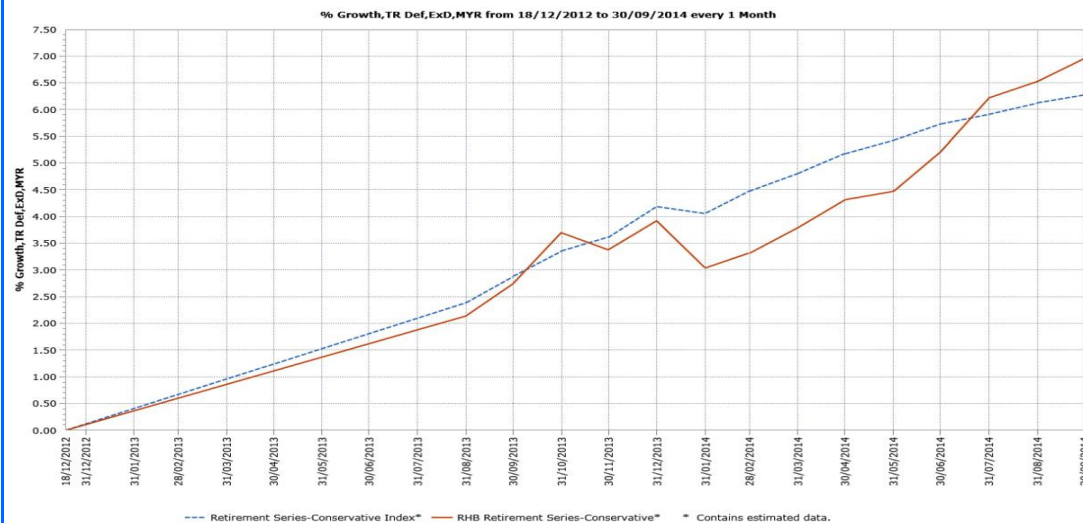
### MEMBER'S PROFILE

**This Fund is suitable for Members who:**

- have low risk profile; and
- are in the age group of 50 years old and above.

### FUND PERFORMANCE ANALYSIS

#### Performance Chart Since Launch\*



#### Cumulative Performance (%)\*

	1 Month	3 Months	6 Months	YTD
Fund	0.40	1.66	3.04	2.93
Benchmark	0.14	0.51	1.40	2.00

	1 Year	Since Launch
Fund	4.11	6.96
Benchmark	3.30	6.27

#### Calendar Year Performance (%)\*

	2013
Fund	3.92
Benchmark	3.90

\*Source: Lipper IM

### FUND DETAILS

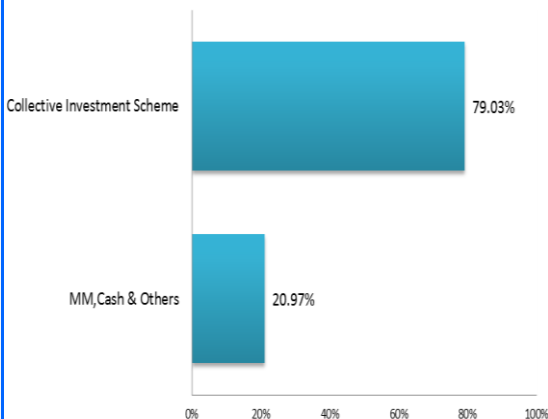
<b>Investment Manager</b>	RHB Asset Management Sdn. Bhd. (formerly known as RHB Investment Management Sdn Bhd)
<b>Trustee</b>	Deutsche Trustees Malaysia Bhd
<b>Fund Category</b>	Core (Conservative)
<b>Launch Date</b>	18 December 2012
<b>Unit NAV</b>	RM0.5215
<b>Fund Size (million)</b>	RM8.15
<b>Units In Circulation (million)</b>	15.64
<b>Financial Year End</b>	31 May
<b>MER (as at 31 May 2014)</b>	0.57%
<b>Min. Initial Investment</b>	RM100.00
<b>Min. Additional Investment</b>	RM100.00
<b>Benchmark</b>	10% FBM KLCI + 90% Maybank's 12 mths FD Rate
<b>Sales Charge</b>	Up to 0.50% of NAV per unit
<b>Redemption Charge</b>	None
<b>Annual Management Fee</b>	Up to 1.00% p.a. of NAV*
<b>Annual Trustee Fee</b>	Up to 0.04% p.a. of NAV*
<b>Switching Fee</b>	None
<b>PPA (Private Pension Administrator) Annual Fee</b>	RM8.00^
<b>PPA Pre-retirement Withdrawal Fee</b>	RM25.00 per withdrawal
<b>PPA Transfer Fee</b>	RM25.00 per transfer
<b>Annual PPA Administration Fee</b>	0.04% p.a. of NAV*
<b>Redemption Period</b>	Within 10 days after receipt the request to repurchase
<b>Cooling-Off Period</b>	Within 6 business days from the date of receipt of application
<b>Distribution Policy</b>	Annually, if any

\*For the purpose of computing the fees, the NAV of the Fund is exclusive of the management fee, trustee fee and annual PPA administration fee for the relevant day.

^This fee is payable for the first contribution made in any calendar year and there is no fee payable if no contribution is made in any calendar year.

### FUND PORTFOLIO ANALYSIS

#### Sector Allocation\*



#### Top Holdings (%)\*

RHB GOLDENLIFE TODAY	79.03
----------------------	-------

\*As percentage of NAV

### FUND STATISTICS

Historical NAV (RM)	1 Month	12 Months	Since Launch
	High	0.5215	0.5228
Low	0.5194	0.5094	0.4925

Source: Lipper IM

#### Historical Distributions (Last 1 Year) (Net)

Distribution (sen)	
28 May 2014	0.0130

Source: RHB Asset Management Sdn. Bhd. (Formerly known as RHB Investment Management Sdn. Bhd.)

**RHB RETIREMENT SERIES - CONSERVATIVE FUND**

This Fund aims to seek to provide capital preservation for the members' investment.

**MANAGER'S COMMENTS**

**MARKET REVIEW**

The FBMKLCI closed the calendar year third quarter on a weak note, with the benchmark index touching six-month lows in the month of September. This was on the back of increased net foreign selling (as also seen in the region) on the lack of local catalysts, uncertainties of when the U.S. Federal Reserve will begin its interest rate hikes, and continued geopolitical tensions with the European Union threatening to escalate sanctions if pro-Russian separatists advance further in eastern Ukraine, and a more prolonged student occupation in Hong Kong. The FBMKLCI closed the month at 1,846 points, or -1.06%.

On the domestic economic front, July's trade surplus narrowed less than expected to RM3.64bil on lower imports. Exports to US, Japan and China continue to slump while a mild expansion was seen in Europe and Singapore. Industrial Production in July rose just 0.5% YoY (June: 7.0% YoY), where the slowdown was broad based, and likely exaggerated by moving holiday effects as Ramadan fell almost entirely in Jul 2014.

Bank Negara Malaysia ("BNM") held the overnight policy rate ("OPR") unchanged at 3.25% in the September Monetary Policy Committee ("MPC") meeting, noting that the global economy "continues to expand at a moderate pace", similar to the July assessment, though "growth performance has been uneven" among advanced economies. On the domestic economy, while the MPC continues to expect the economy to remain on a "steady growth path", the omission of the word "firmly" suggests somewhat less conviction. The pause in the OPR spurred buying interest on the short-end of the curve. As a result, the local government bond market bullish steepened with short-end yields compressed more than long-end yields.

**MARKET OUTLOOK**

Global economic growth is ticking up, thanks to the various Quantitative Easing (QE) measures, accommodative and supportive packages by major world economies over the past few years. Despite hiccups along the way, there have been improvements in employment levels, business and consumer confidence, and industrial and manufacturing activities globally. With the U.S. tapering off completely its massive QE pumping and start guiding on its current ultra-low interest rates, markets will continue to adjust to this transition from liquidity-driven to a more fundamental and growth-driven focus.

Malaysia is expected to grow between 4.5%-5.5% in 2014, likely nearer the upper band and higher than the 4.7% registered for 2013 and supported by a better global economy and investment spending. Inflation will be higher at 3.0%-4.0% from increased fuel and electricity costs and expectations of more reduction in subsidies moving forward and expected inflationary expectations prior to GST implementation. Against a backdrop of expected lower domestic demand and private consumption due to rising cost, net exports is expected to pick up helped by stronger exports to developed markets on an improving global economic growth outlook. BNM is likely to maintain its 3.25% OPR level for the rest of 2014 after the hike in July. Government fiscal restraints are expected to continue.

Equities still look favourable as an asset class backed by corporate earnings growth, a conducive economic environment and a more stable fiscal plan. For fixed income, preference for corporate bonds is maintained, providing a steady income stream. Asset allocation (in-line with asset allocation limits) will be pro-actively managed with market movements to optimize investment returns.

**DISCLAIMER:**

A Product Highlights Sheet ("PHS") highlighting the key features and risks of the Fund is available and investors have the right to request for a PHS. Investors are advised to obtain, read and understand the PHS and the contents of The Disclosure Document in relation to the RHB Retirement Series dated 18 December 2012 and its supplementary(ies)(if any) ("Disclosure Document"), before investing. The disclosure document has been registered with the Securities Commission Malaysia who takes no responsibility for its contents. Amongst others, investors should consider the fees and charges involved. Investors should also note that the price of units and distributions payable, if any, may go down as well as up. Where a distribution is declared, investors are advised that following the issue of additional units/distribution, the NAV per unit will be reduced from cum-distribution NAV to ex-distribution NAV. Any issue of units to which the Disclosure Document relates will only be made on receipt of a form of application referred to in the Disclosure Document. For more details, please call 1-800-88-3175 for a copy of the PHS and the Disclosure Document or collect one from any of our branches or authorised distributors. The Manager wishes to highlight the specific risks of the Fund are equity risk, credit risk, interest rate risk, liquidity risk and income distribution risk. These risks and other general risks are elaborated in the Disclosure Document. This factsheet is prepared for information purposes only. It does not have regard to the specific investment objectives, financial situation and the particular needs of any specific person who may receive it. Past performance is not necessarily a guide to future performance. Returns may vary from year to year.